

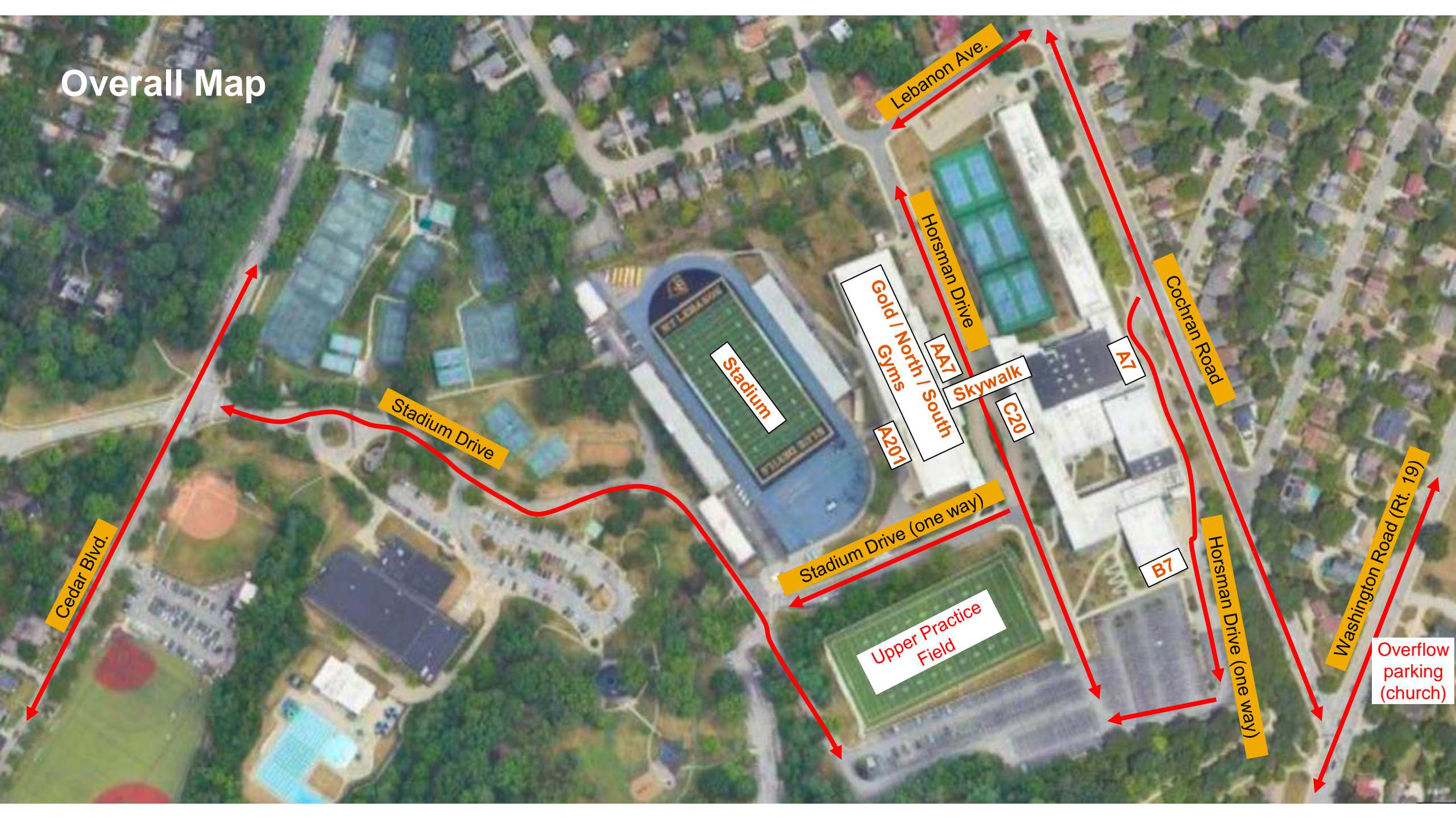
# Judges Info

# Schedule – 2024 PIMBA Show at Mt. Lebanon on October 12, 2024

<b>BAND</b>	<b>CLASS</b>	<b>WARM-UP AREA</b>	<b>WARM-UP TIME (45 min)</b>	<b>TRAVEL TIME (15 min)</b>	<b>REPORT TO GATE (T-15 min)</b>	<b>PERFORM TIME (T)</b>
<b>Opening Ceremonies: Mt. Lebanon</b>			4:00pm – 4:45pm	4:45pm	5:00pm	5:15pm
East Fairmont High School (Busy Bee Band and Honeybees)	Festival	C	4:15pm – 5:00pm	5:00pm	5:15pm	5:30pm
Kiski Area High School	AAAA	A	4:30pm – 5:15pm	5:15pm	5:30pm	5:45pm
Moon Area High School	AAAA	B	4:45pm – 5:30pm	5:30pm	5:45pm	6:00pm
Trinity High School	A	C	5:00pm – 5:45pm	5:45pm	6:00pm	6:15pm
<b>Intermission</b>						6:30pm – 7:00pm
Yough	A	A	5:45pm – 6:30pm	6:30pm	6:45pm	7:00pm
Southmoreland	A	B	6:00pm – 6:45pm	6:45pm	7:00pm	7:15pm
Burrell	AA	C	6:15pm – 7:00pm	7:00pm	7:15pm	7:30pm
Mt. Lebanon	AAA/ Festival	A	6:30pm – 7:15pm	7:15pm	7:30pm	7:45pm
<b>Awards Ceremony / Judges move to critique</b>						8:00pm
<b>Critique (8:30 – 8:45 Bands 1, 2, 3) (8:45 – 9:00 Bands 4, 5, 6) (9:00 – 9:15 Band 7)</b>						8:30pm – 9:15pm
<b>End</b>						9:30pm



# Overall Map



Cedar Blvd.

Stadium Drive

Stadium Drive (one way)

Upper Practice Field

Gold / North / South Gyms

Skywalk

Lebanon Ave.

Horsman Drive

Cochran Road

Horsman Drive (one way)

Washington Road (Rt. 19)

Overflow parking (church)

Stadium

A201

AA7

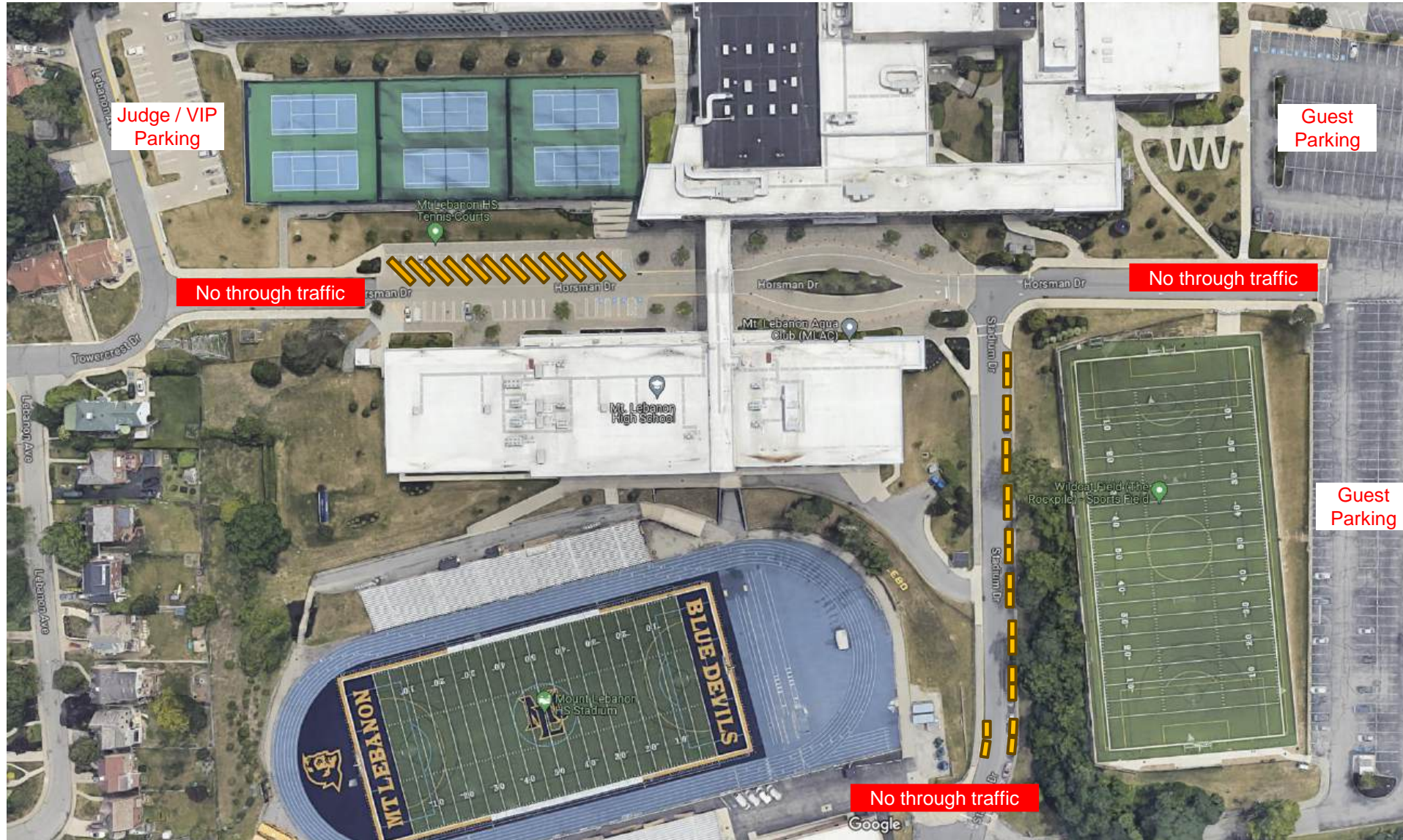
C20

A7



B7



# Parking



## Legend:

-  Bus
-  Truck or Trailer (2 together equal large Penske truck)

Buses / trucks / trailers will be directed to parking spaces upon arrival.

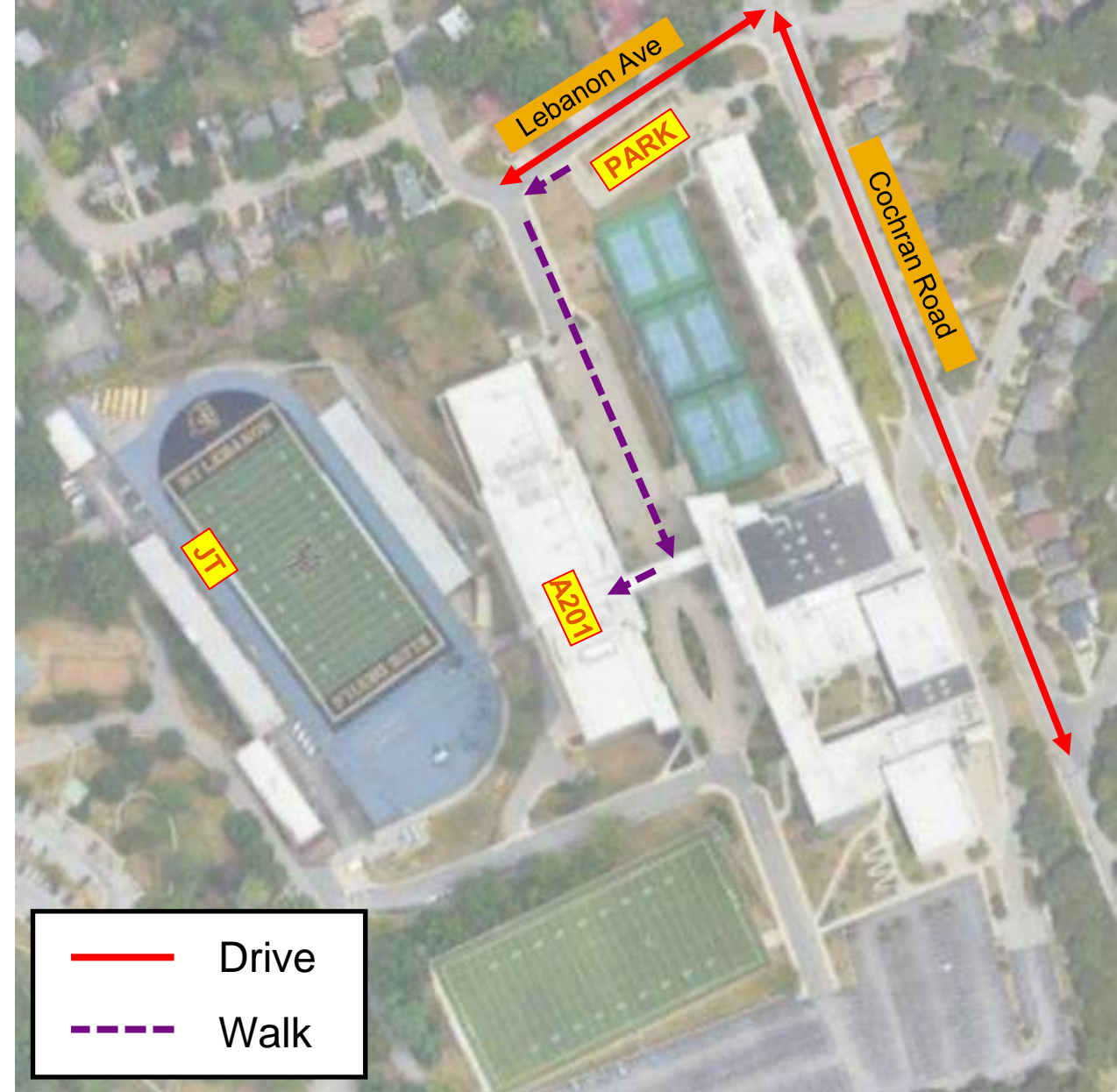
 ← Accessible Parking Lot (limited space)



# Judge Arrival Details

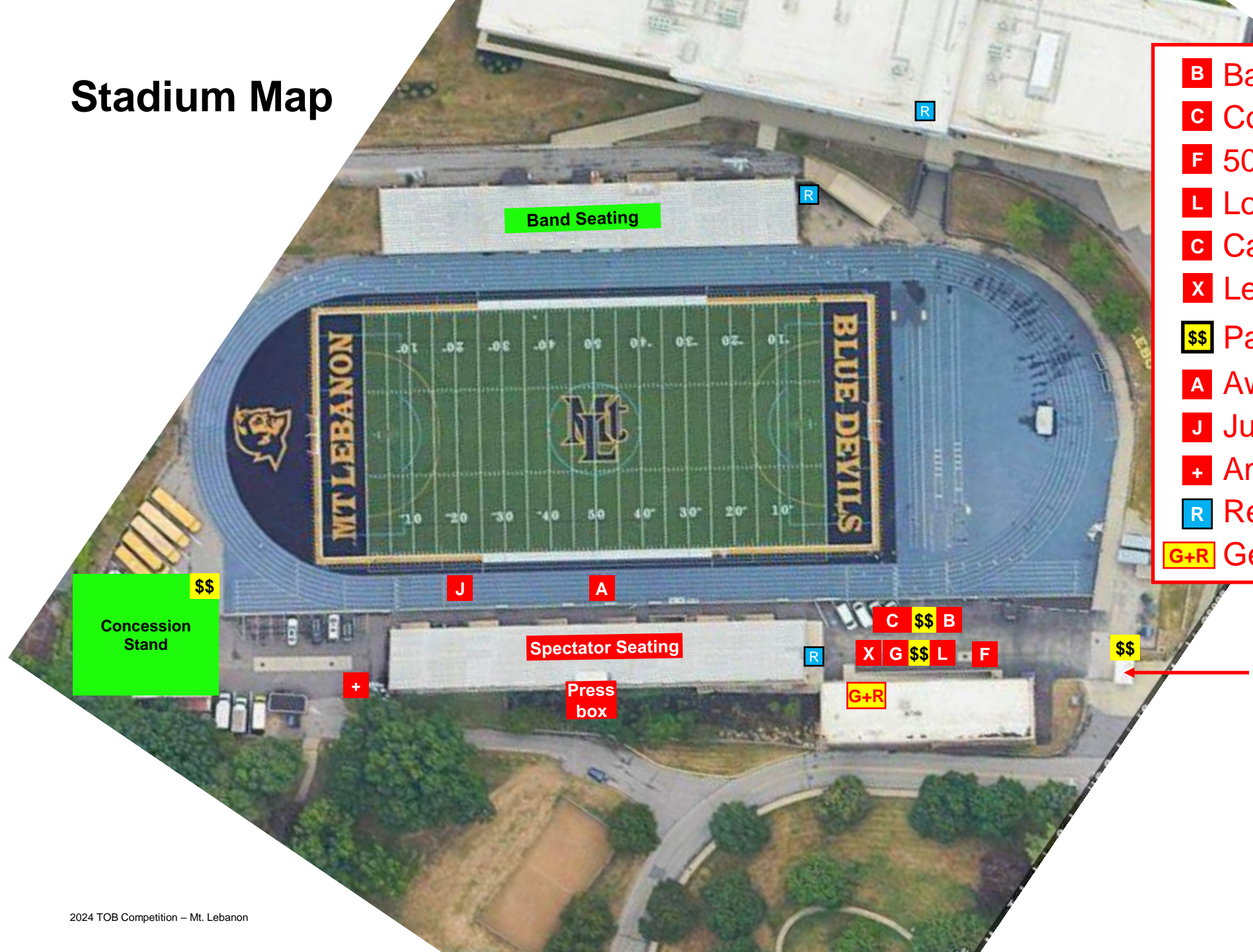
Area	Description
JR	Judges Rooms – A201-202 (in Athletic Building)
JT	Judges Tent (on 20 yard line of field)

- Judges park in Administrative office lot (above tennis courts) and walk to Athletic building
- Look for signage pointing to the Judges' Room (A201)
- Food will be ready at 3:15pm (2 hours pre-show)
- Volunteers will provide walking instructions to field
- Opening ceremonies begin at 5:15pm
- Judges' tent and press box will have beverages / snacks





# Stadium Map



- B** Band / Spirit table
- C** Cookie table
- F** 50/50
- L** Love notes
- C** Candygrams
- X** Lebo Guard table
- \$\$** Pay Station
- A** Awards table
- J** Judges' tent
- +** Ambulance
- R** Restrooms
- G+R** Gender-neutral restrooms

← Ticket booth