

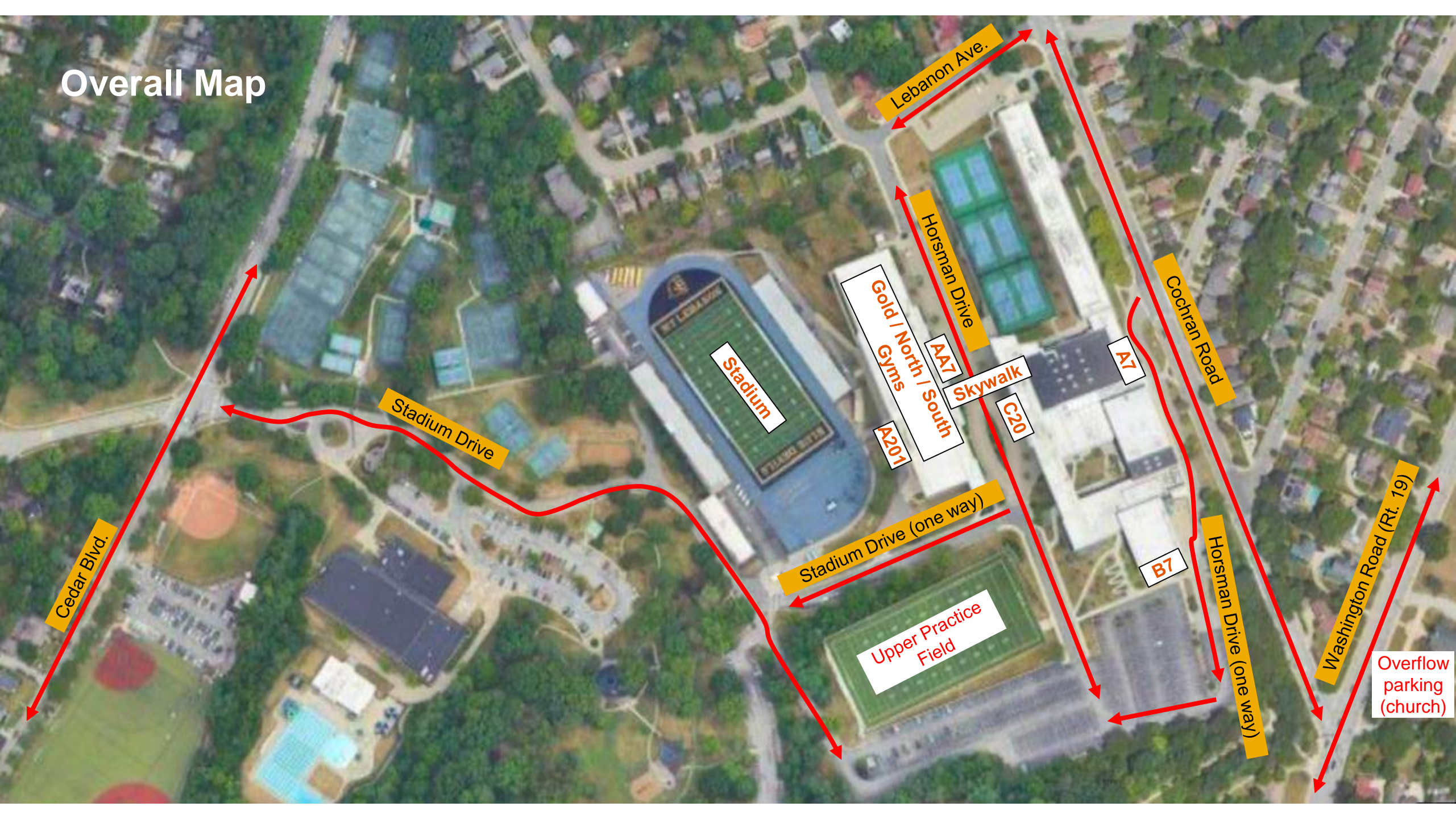
# Director Info



# Schedule – 2024 PIMBA Show at Mt. Lebanon on October 12, 2024

BAND	CLASS	WARM-UP AREA	WARM-UP TIME (45 min)	TRAVEL TIME (15 min)	REPORT TO GATE (T-15 min)	PERFORM TIME (T)
<b>Opening Ceremonies: Mt. Lebanon</b>						
			4:00pm – 4:45pm	4:45pm	5:00pm	5:15pm
East Fairmont High School (Busy Bee Band and Honeybees)	Festival	C	4:15pm – 5:00pm	5:00pm	5:15pm	5:30pm
Kiski Area High School	AAAA	A	4:30pm – 5:15pm	5:15pm	5:30pm	5:45pm
Moon Area High School	AAAA	B	4:45pm – 5:30pm	5:30pm	5:45pm	6:00pm
Trinity High School	A	C	5:00pm – 5:45pm	5:45pm	6:00pm	6:15pm
<b>Intermission</b>						6:30pm – 7:00pm
Yough	A	A	5:45pm – 6:30pm	6:30pm	6:45pm	7:00pm
Southmoreland	A	B	6:00pm – 6:45pm	6:45pm	7:00pm	7:15pm
Burrell	AA	C	6:15pm – 7:00pm	7:00pm	7:15pm	7:30pm
Mt. Lebanon	AAA / Festival	A	6:30pm – 7:15pm	7:15pm	7:30pm	7:45pm
<b>Awards Ceremony / Judges move to critique</b>						8:00pm
<b>Critique (8:30 – 8:45 Bands 1, 2, 3) (8:45 – 9:00 Bands 4, 5, 6) (9:00 – 9:15 Band 7)</b>						8:30pm – 9:15pm
<b>End</b>						9:30pm

# Overall Map



Stadium

Gold / North / Gyms

AA7

A201

Skywalk

C20

A7

Horsman Drive

Stadium Drive

Stadium Drive (one way)

Upper Practice Field

B7

Horsman Drive (one way)

Cedar Blvd.


Lebanon Ave.

Cochran Road

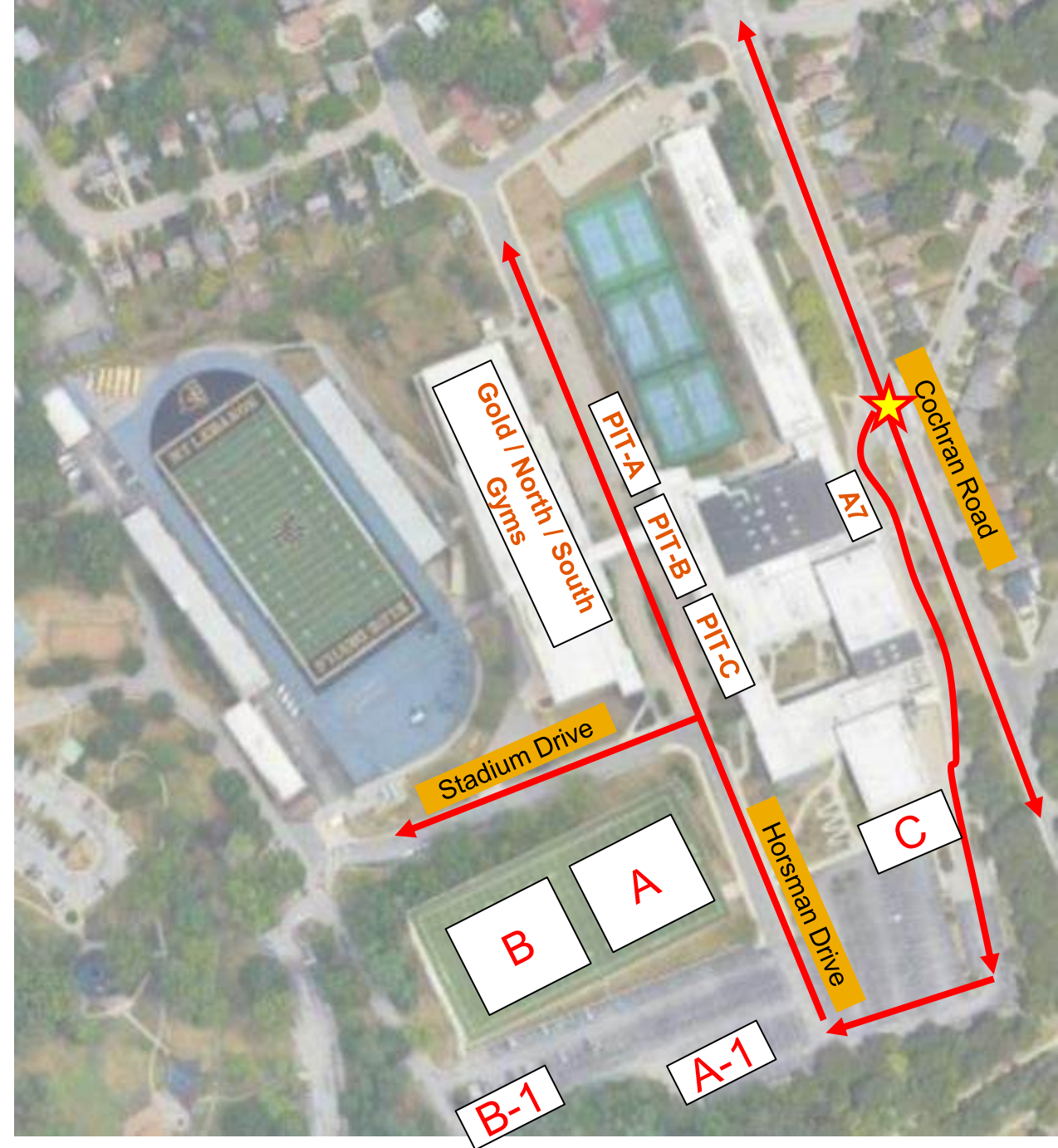
Washington Road (Rt. 19)

Overflow parking (church)

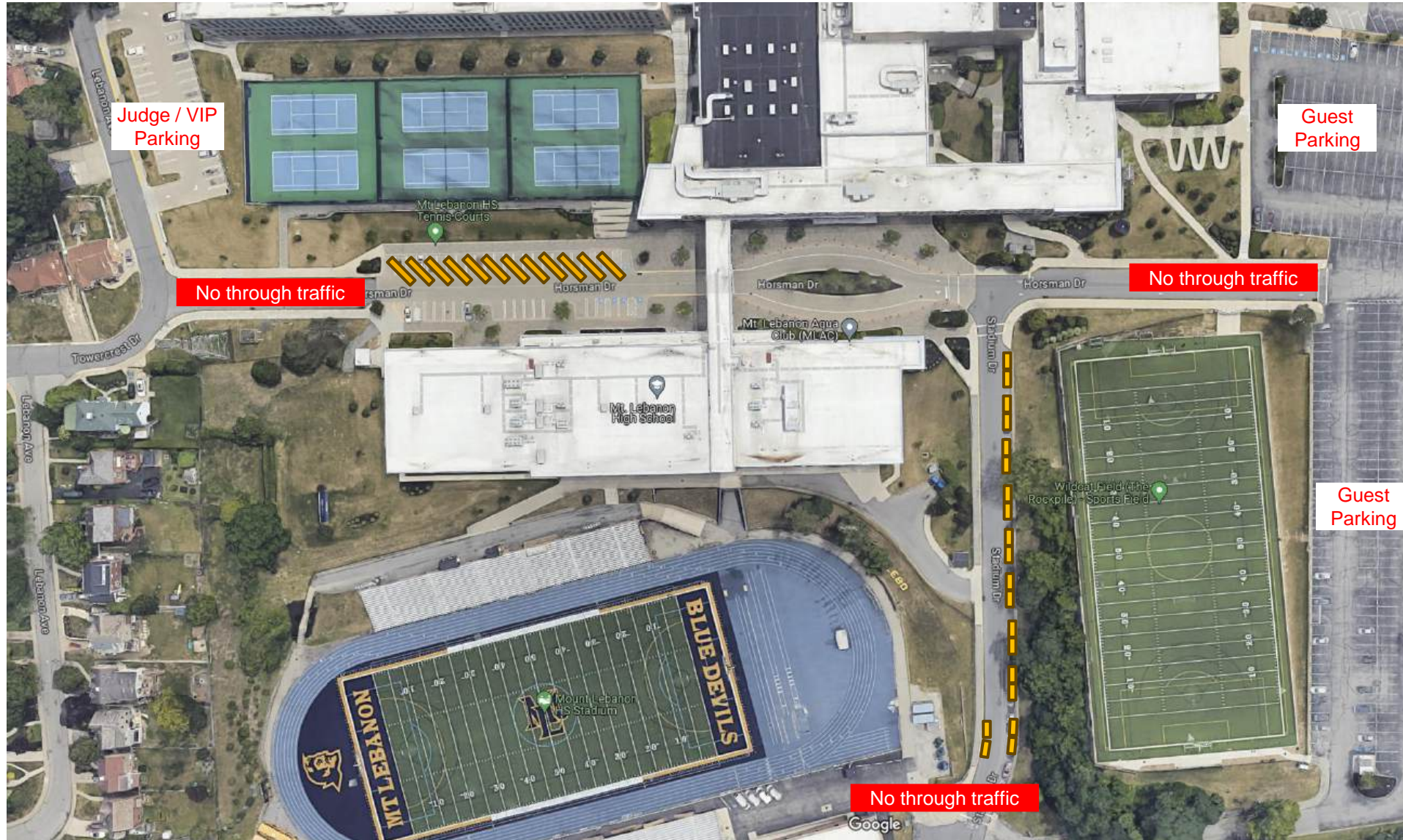
# Band Director Arrival Instructions

- Enter via Cochran Road 
- **Stop** at doorway A7 to meet your greeter
- Buses / trucks / trailers will be directed to parking spaces upon arrival
- Band / guard unloads, gets equipment, and walks to assigned warm-up area A / B / C (\*)
- Pit unloads, gets equipment, and walks to warm-up area PIT A / PIT B / PIT C



*(\*) If the Upper Practice Field is still in use, we will have part of the parking lot blocked off for warm-ups.*



# Parking



## Legend:

-  Bus
-  Truck or Trailer (2 together equal large Penske truck)

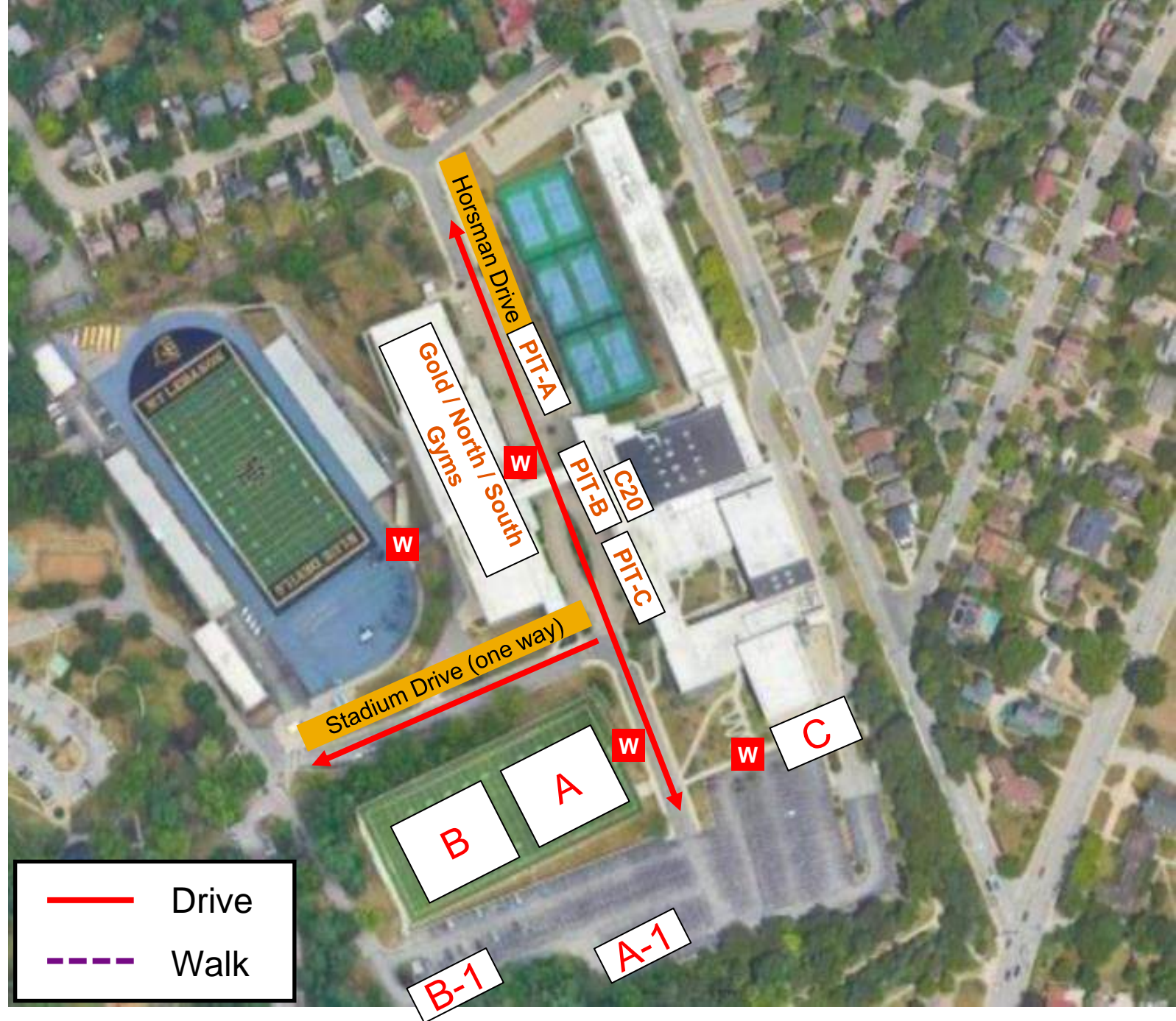
Buses / trucks / trailers will be directed to parking spaces upon arrival.

 Accessible Parking Lot (limited space)

# Warm-up Areas

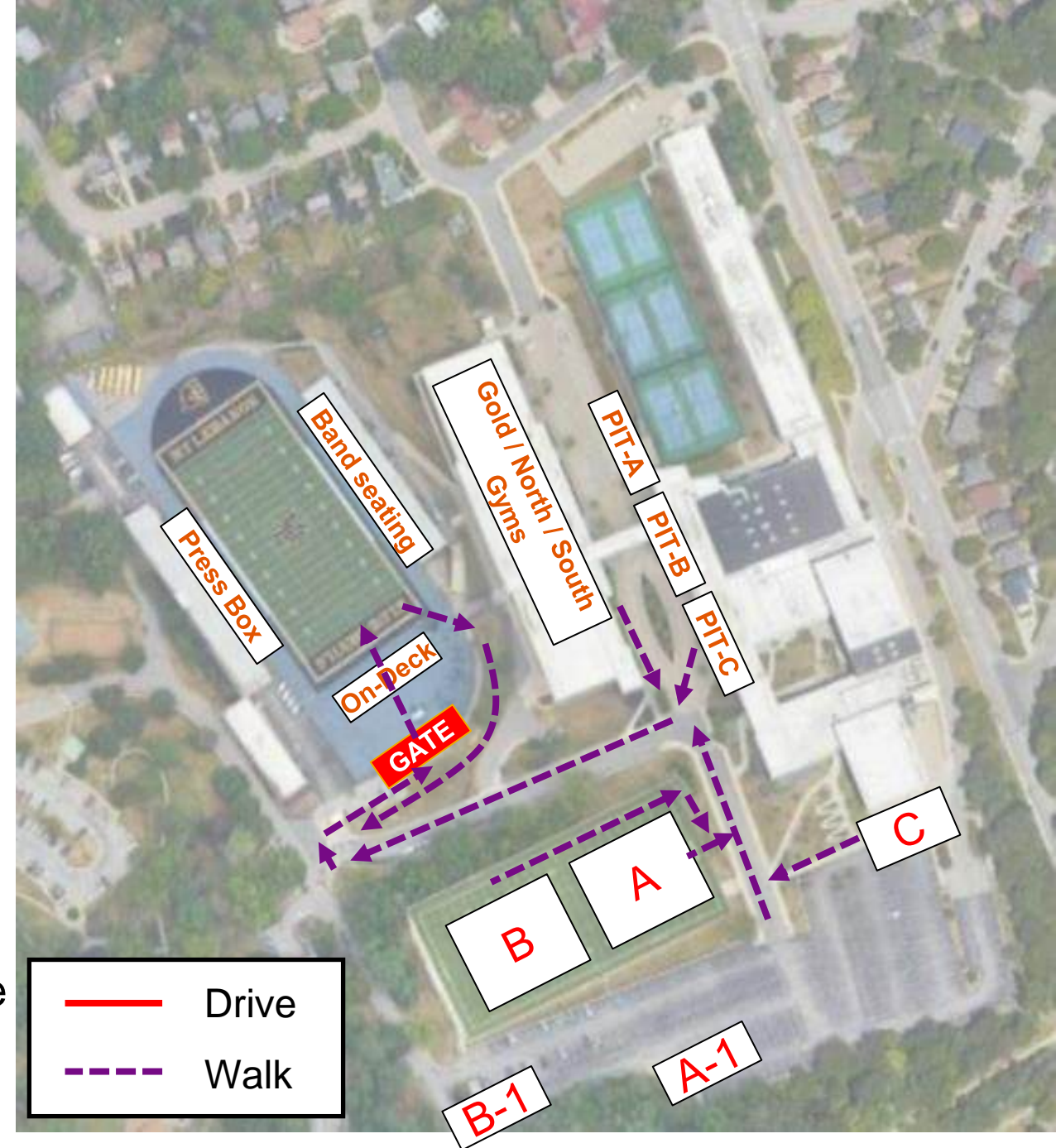
Area	Description
A	Upper Practice Field – A (rain contingency: Gold Gym)
A-1	Parking lot above UPF (in case field is in use)
B	Upper Practice Field – B (rain contingency: North Gym)
B-1	Parking lot above UPF (in case field is in use)
C	Fine Arts Theater Patio (rain contingency: C-20 Lobby)
PIT-A	C20 Plaza – A (contingency n/a; covered)
PIT-B	C20 Plaza – B (contingency n/a; covered)
PIT-C	C20 Plaza – C (contingency n/a; covered)

**W** Water station



## From Warm-up to Field

- At the end of your warm-up time, vacate the area and proceed to the gate
- There is 15-minutes travel time built into the schedule (it is approximately a 5-minute walk)
- Report to the gate at T-15 minutes
- At T-10 minutes, the Field Operations Coordinator will escort you from the gate to the designated on-deck location
- At the conclusion of the band on the field, the Field Operations Coordinator will escort the band to the back of the field or into the end zone



# Seating for Visiting Bands

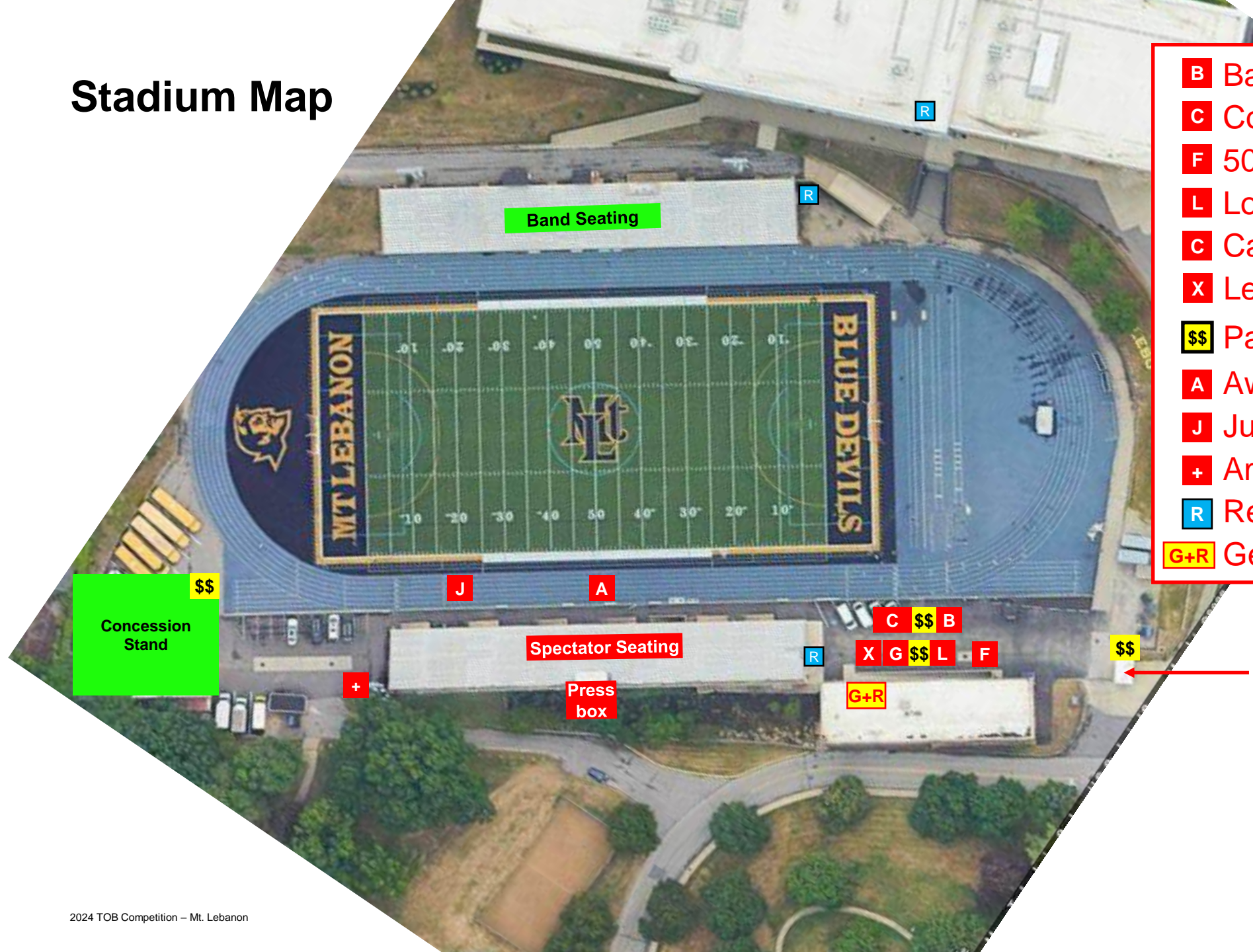


Band	Seats Needed
Busy Bee Band	150
Kiski	160
Moon	110
Trinity	65

Band	Seats Needed
Yough	55
Southmoreland	35
Burrell	75
Mt. Lebanon	110



# Stadium Map



- B** Band / Spirit table
- C** Cookie table
- F** 50/50
- L** Love notes
- C** Candygrams
- X** Lebo Guard table
- \$\$** Pay Station
- A** Awards table
- J** Judges' tent
- +** Ambulance
- R** Restrooms
- G+R** Gender-neutral restrooms

← Ticket booth

# Concessions Menu

- Pulled chicken sandwich \$8

- Nacho Grande \$7  
(chips, meat, cheese, lettuce, salsa, sour cream)

- Nacho with cheese \$4

- Mac & Cheese with pulled chicken \$7

- Mac & Cheese \$4

- Pepperoni roll \$6

- Cheese pizza \$4

- Marching Taco \$4  
(chips, meat, cheese, lettuce, salsa, sour cream)

- Hot dog \$3 (add cheese \$1)

- Coffee \$2

- Pretzel \$3 (add cheese \$1)

- Soda \$2

- Chips \$1

- Water \$1