

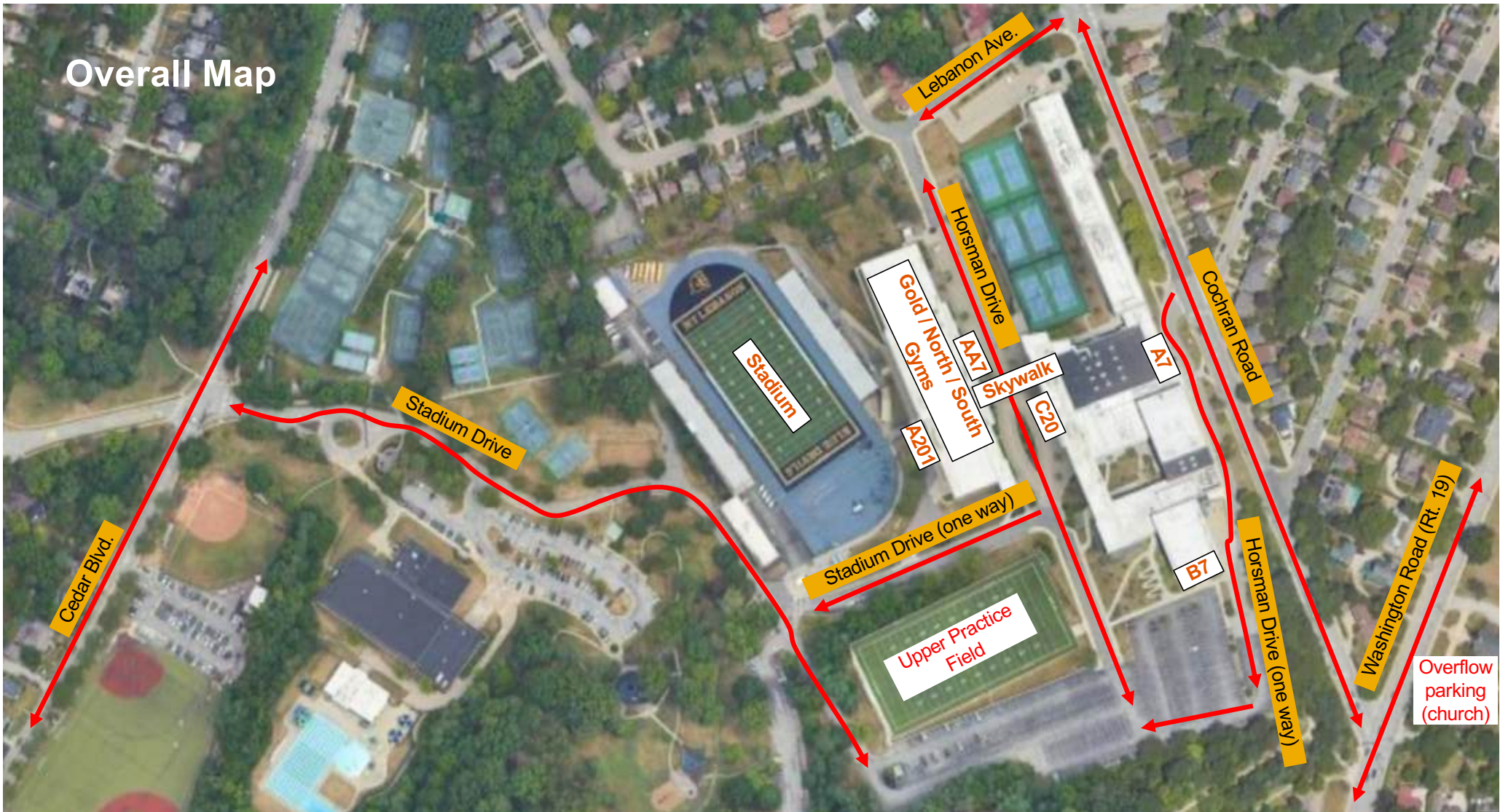
# Director Info



## Schedule – 2024 TOB Show at Mt. Lebanon on September 28, 2024

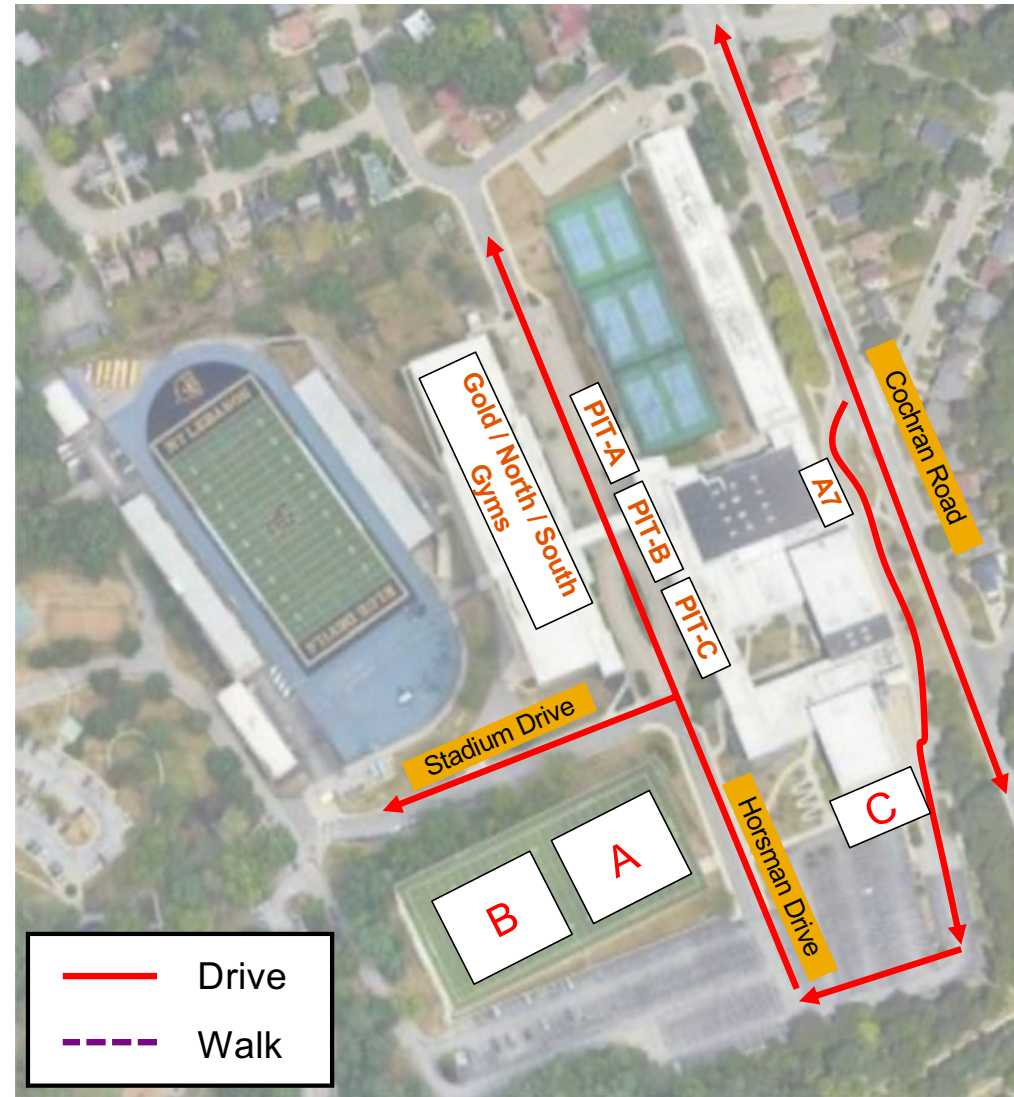
<b>BAND</b>	<b>CLASS</b>	<b>WARM-UP AREA</b>	<b>WARM-UP TIME (45 min)</b>	<b>TRAVEL TIME (15 min)</b>	<b>REPORT TO GATE (T-15 min)</b>	<b>PERFORM TIME (T)</b>
<b>Opening Ceremonies (Mt. Lebanon)</b>		A	4:30pm	5:15pm	5:30pm	5:45pm
Seton LaSalle	1-F	B	4:45pm	5:30pm	5:45pm	6:00pm
Serra Catholic	1-A	C	5:00pm	5:45pm	6:00pm	6:15pm
Elizabeth Forward	2-A	A	5:15pm	6:00pm	6:15pm	6:30pm
Steel Valley	2-A	B	5:30pm	6:15pm	6:30pm	6:45pm
East Allegheny	2-A	C	5:45pm	6:30pm	6:45pm	7:00pm
<b>Intermission</b>						7:15pm
Little Devils	Festival	A	6:30pm	7:15pm	7:30pm	7:45pm
Youngsville	1-O	B	6:40pm	7:25pm	7:40pm	7:55pm
McGuffey	2-O	C	6:55pm	7:40pm	7:55pm	8:10pm
Mt. Lebanon	4-O	Gym	7:10pm	7:55pm	8:10pm	8:25pm
<b>Awards Ceremony / Judges move to critique</b>						
<b>Critique</b>						
<b>End</b>						

# Overall Map

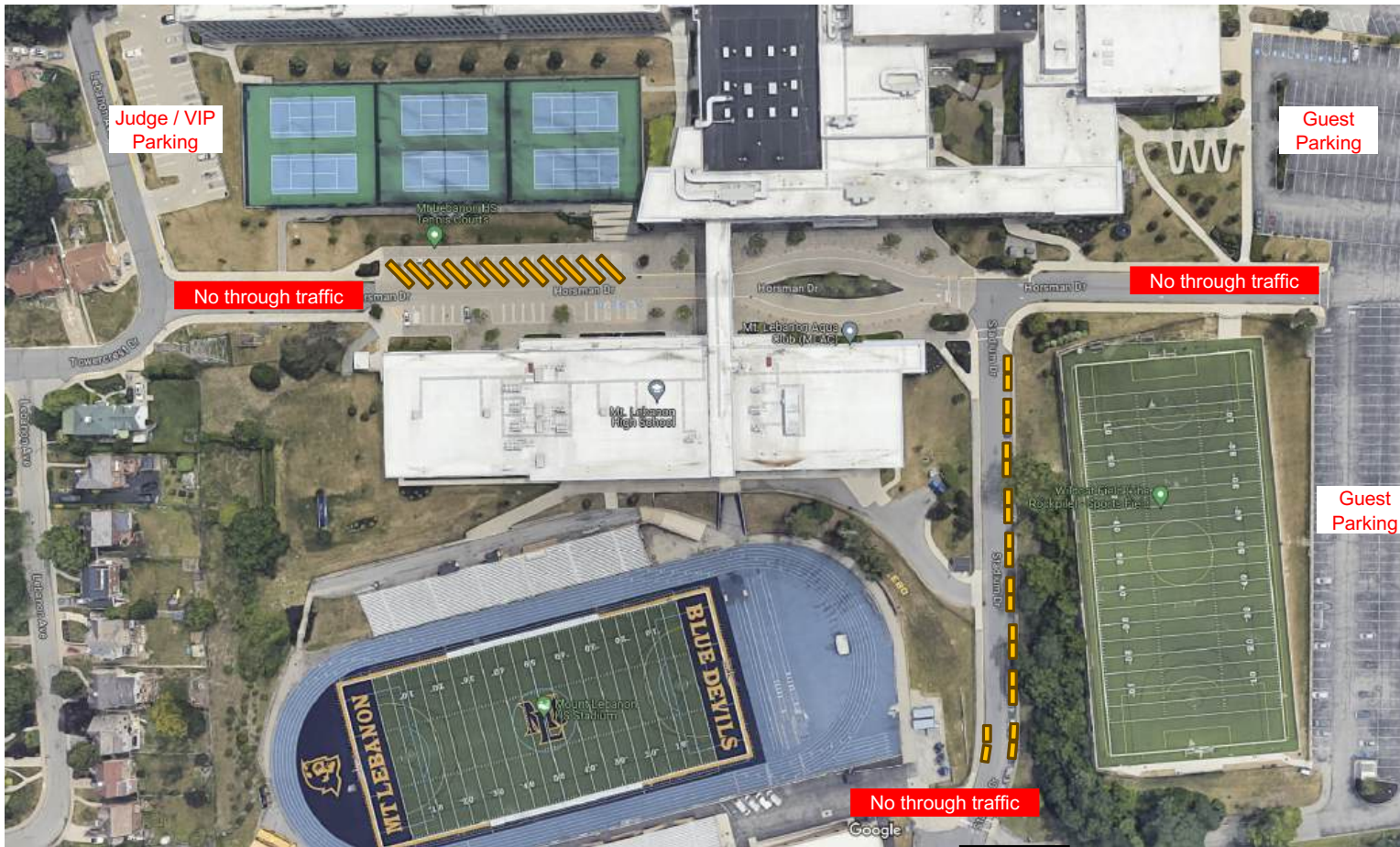


# Band Director Arrival Instructions

- Enter via Cochran Road
- **Stop** at doorway A7 to meet your greeter
- Buses / trucks / trailers will be directed to parking spaces upon arrival
- Band / guard unloads, gets equipment, and walks to assigned warm-up area A / B / C
- Pit unloads, gets equipment, and walks to warm-up area PIT A / PIT B / PIT C



# Parking



## Legend:

- Bus
- Truck or Trailer (2 together equal large Penske truck)

Buses / trucks / trailers will be directed to parking spaces upon arrival.

← Accessible Parking Lot (limited space)

# Warm-up Areas

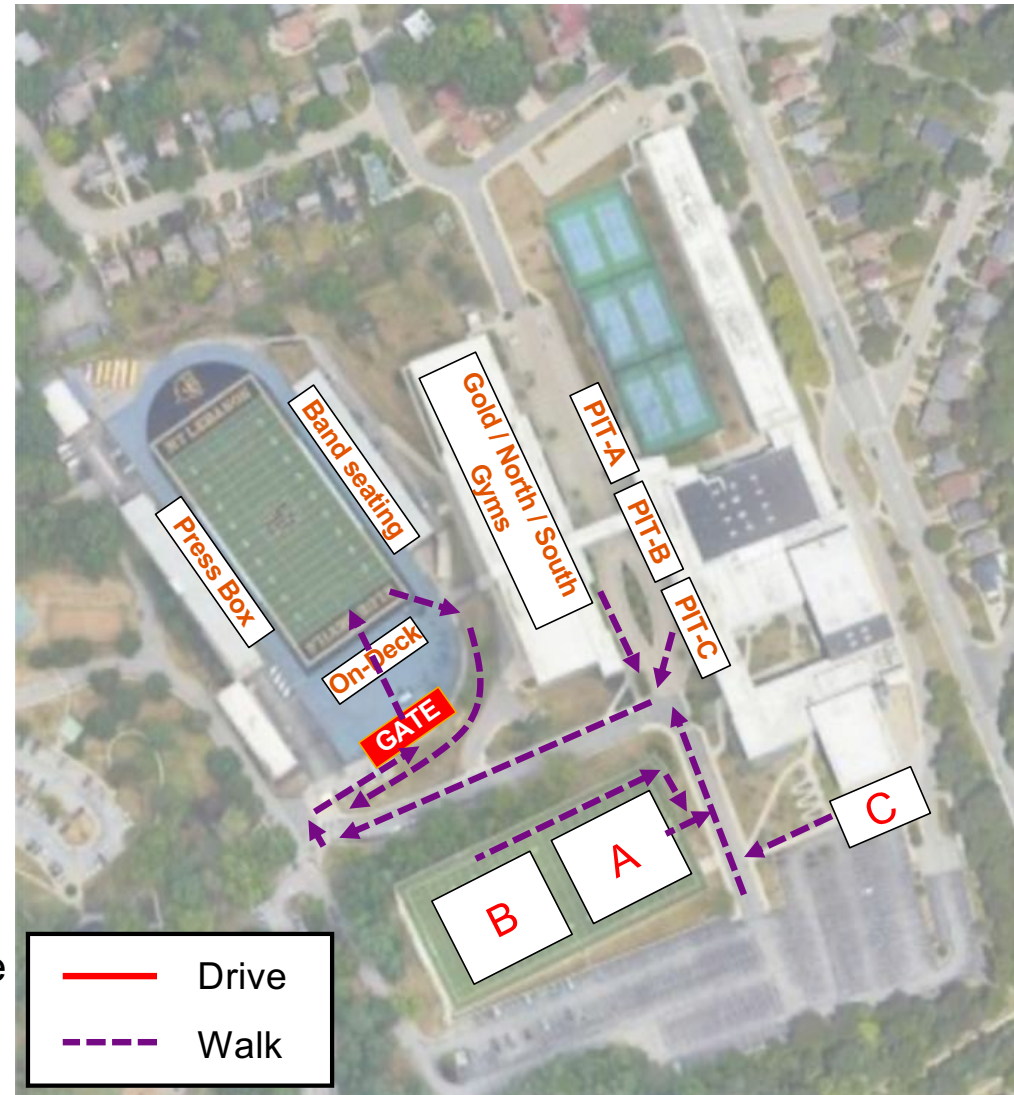
Area	Description
A	Upper Practice Field – A (contingency: Gold Gym)
B	Upper Practice Field – B (contingency: South Gym)
C	Fine Arts Theater Patio (contingency: C-20 Lobby)
PIT-A	C20 Plaza – A (contingency n/a; covered)
PIT-B	C20 Plaza – B (contingency n/a; covered)
PIT-C	C20 Plaza – C (contingency n/a; covered)

**W** Water station



## From Warm-up to Field

- At the end of your warm-up time, vacate the area and proceed to the gate
- There is 15-minutes travel time built into the schedule (it is approximately a 5-minute walk)
- Report to the gate at T-15 minutes
- At T-10 minutes, the Field Operations Coordinator will escort you from the gate to the designated on-deck location
- At the conclusion of the band on the field, the Field Operations Coordinator will escort the band to the back of the field or into the end zone



# Seating for Visiting Bands

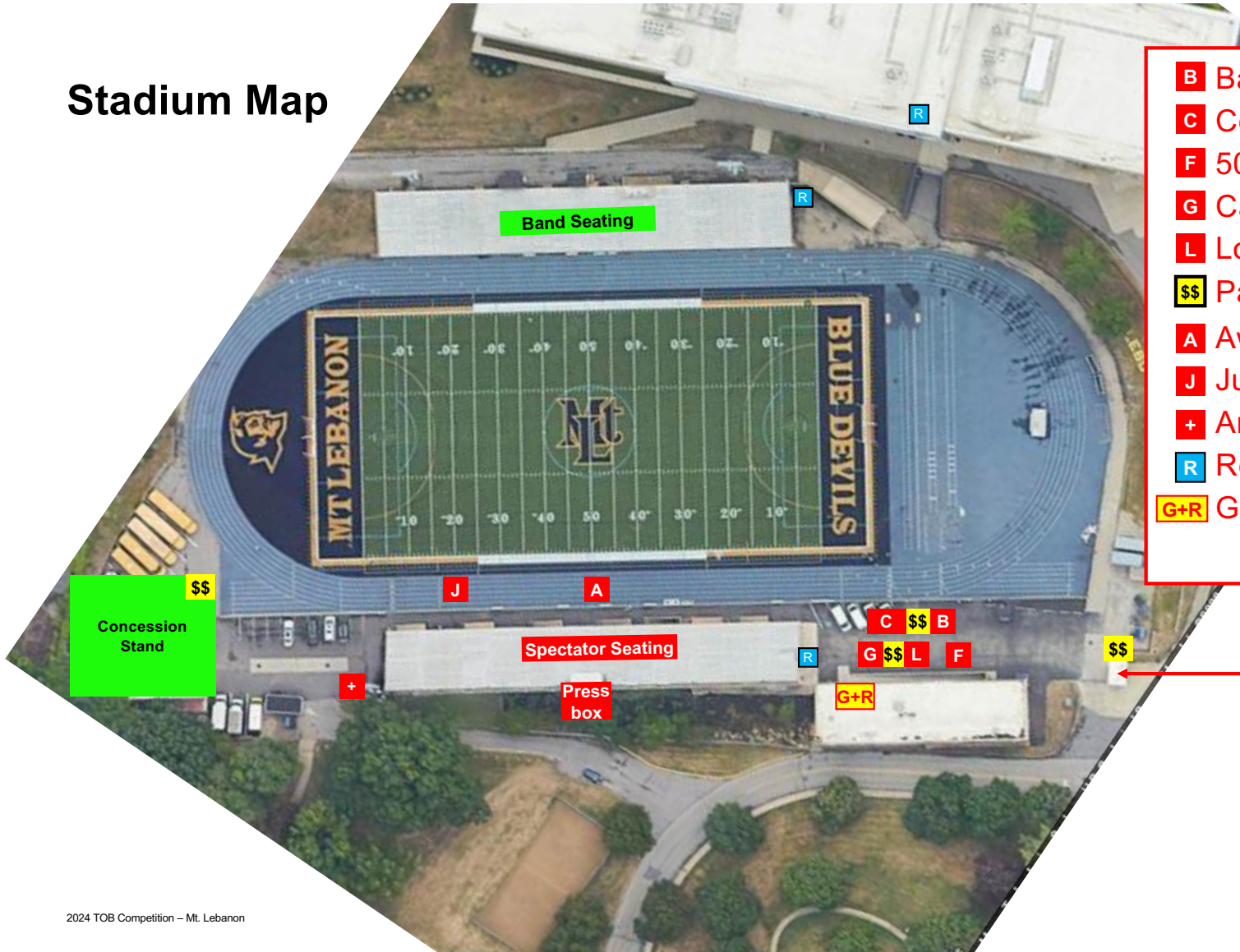


Band	Seats Needed
Seton LaSalle	30
Serra Catholic	25
Elizabeth Forward	<i>Estimate 60</i>
Steel Valley	40
East Allegheny	50

Band	Seats Needed
Youngsville	40
McGuffey	Estimate 70
Mt. Lebanon	110



# Stadium Map



- B** Band / Spirit table
- C** Cookie table
- F** 50/50
- G** Candygrams
- L** Love notes
- \$\$** Pay Station
- A** Awards table
- J** Judges' tent
- +** Ambulance
- R** Restrooms
- G+R** Gender-neutral restrooms

← Ticket booth

## Concessions Menu Sign

### **CONCESSIONS MENU**

**Pizza \$4**

**Marching Taco \$4**

**Mac & Cheese \$4**

**Hot dog \$3**

**Pretzel \$3**

**Soda \$2**

**Water \$1**

**Chips \$1**